

What's in this report?

HIV and AIDS in New York City: an overview..... 1
 Reported AIDS cases, PLWHA and deaths among reported HIV/AIDS cases..... 1
 Which HIV-related events are reportable?..... 2
 Reported HIV/AIDS diagnoses, PLWHA and deaths, January – March 2003..... 2
 Reported HIV/AIDS diagnoses, PLWHA and deaths, January – December 2002..... 3
 HIV and AIDS in New York City, 2002..... 3
 A new surveillance system for an old epidemic..... 3
 HIV/AIDS in UHF neighborhoods..... 4

Publication schedule: This report reflects events occurring through March 31, 2003, and reported by December 31, 2003. It reflects diagnoses made through 9 months prior to the publication date because the majority of cases have been reported within that time. Cases continue to be reported for many months later, hence the continuously changing numbers.

To receive this report via e-mail, send an e-mail request to: hivreport@health.nyc.gov

For electronic versions of this and other HIV-related reports, visit: www.nyc.gov/html/doh/html/pub/pub.html

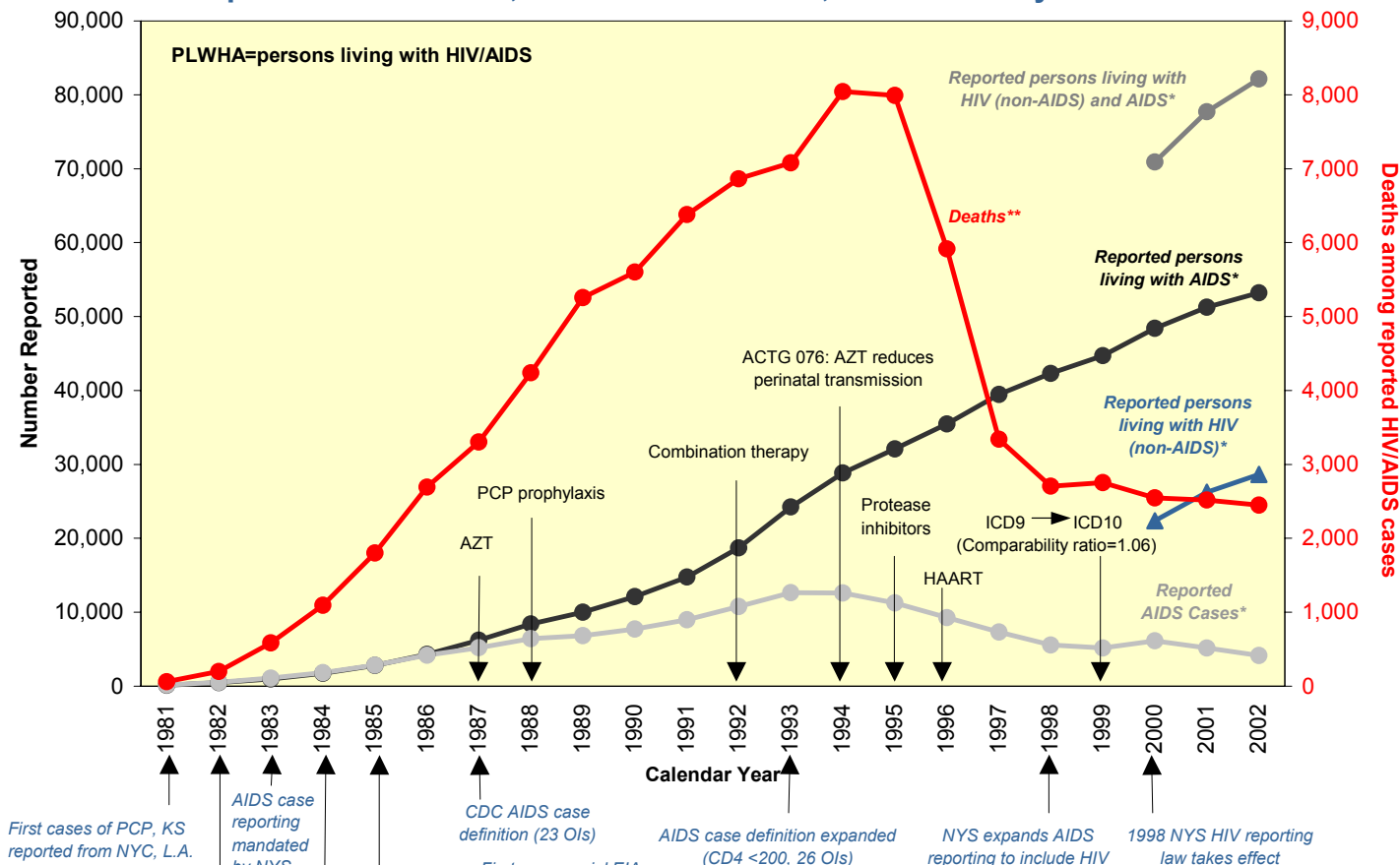
HIV Epidemiology Program

346 Broadway, Room 706, CN44, New York, NY 10013
 Tel: (212) 442-3388 Fax: (212) 788-2520

HIV and AIDS in New York City: An Overview

- ❑ As of **March 31, 2003**, **83,249** New Yorkers were diagnosed and known to be living with HIV or AIDS. **27,431** persons are living with HIV (non-AIDS), and **55,818** are living with AIDS.
 - The true number of persons with HIV/AIDS (PLWHA) in NYC is higher. It is estimated that at least **25%** of persons living with HIV have never been tested.
 - Many people are diagnosed late in the course of their HIV infection, after they already have an opportunistic infection or low CD4 count. In **2002**, **25%** of persons diagnosed with HIV first learned that they were infected with HIV at the time they were diagnosed with AIDS.
- ❑ A cumulative total of **137,168** New Yorkers have been diagnosed with AIDS since **1981**. **83,818 (61%)** have died.
- ❑ **14%** of living AIDS cases in the US are in NYC, and **17%** of AIDS deaths in the US have occurred in NYC.
- ❑ AIDS incidence in NYC peaked at **12,658** cases in **1993**.
- ❑ Named reporting of HIV infection began on **June 1, 2000**. In the first full calendar year (**2001**) of HIV reporting, **5,020** New Yorkers were diagnosed with HIV (non-AIDS), and **5,160** were diagnosed with AIDS.
- ❑ In the second full calendar year (**2002**) of HIV reporting, **4,170** New Yorkers were diagnosed with HIV (non-AIDS), and **4,155** were diagnosed with AIDS.
- ❑ Mortality dropped sharply beginning in **1996**, but New Yorkers continue to die of HIV. In **2002**, **1,712** persons died of HIV-related causes and **2,448** persons with HIV or AIDS died of all causes.

Reported AIDS Cases, PLWHA and Deaths, New York City 1981 – 2002



* 2002 cases reported through December 31, 2003

** 2002 deaths reported through July 1, 2003

Reported HIV/AIDS diagnoses and deaths occurring January 1, 2003 through March 31, 2003 and reported persons living with HIV/AIDS as of March 31, 2003¹ in NYC

	HIV diagnoses during 1/1/2003–3/31/2003 ¹						AIDS diagnoses 1/1/2003–3/31/2003 ³		PLWHA as of 3/31/2003		Deaths 1/1/2003–3/31/2003	
	Total		Without AIDS		Concurrent with AIDS diagnosis ²		N	%	N	%	N	%
	N	%	N	%	N	%						
Total	1,288	100.0	961	74.6	327	25.4	1,050	100.0	83,249	100.0	388	100.0
Sex												
Male	878	68.2	637	66.3	241	73.7	721	68.7	57,665	69.3	263	67.8
Female	410	31.8	324	33.7	86	26.3	329	31.3	25,390	30.5	125	32.2
Unknown	0	0.0	0	0.0	0	0.0	0	0.0	194	0.2	0	0.0
Race/Ethnicity												
Black	658	51.1	481	50.1	177	54.1	545	51.9	36,742	44.1	209	53.9
Hispanic	407	31.6	302	31.4	105	32.1	328	31.2	26,540	31.9	128	33.0
White	189	14.7	150	15.6	39	11.9	163	15.5	17,830	21.4	48	12.4
Asian/Pacific Islander	23	1.8	17	1.8	6	1.8	14	1.3	817	1.0	2	0.5
Native American	3	0.2	3	0.3	0	0.0	0	0.0	59	0.1	0	0.0
Other/unknown	8	0.6	8	0.8	0	0.0	0	0.0	1,261	1.5	1	0.3
Age group (years)⁴												
0-12	3	0.2	3	0.3	0	0.0	0	0.0	1,460	1.8	0	0.0
13-19	27	2.1	26	2.7	1	0.3	8	0.8	1,180	1.4	1	0.3
20-29	220	17.1	184	19.1	36	11.0	99	9.4	4,583	5.5	10	2.6
30-39	442	34.3	345	35.9	97	29.7	339	32.3	22,023	26.5	79	20.4
40-49	378	29.3	266	27.7	112	34.3	372	35.4	32,770	39.4	167	43.0
50-59	166	12.9	114	11.9	52	15.9	163	15.5	16,282	19.6	107	27.6
60+	52	4.0	23	2.4	29	8.9	69	6.6	4,951	5.9	24	6.2
Borough of residence												
Manhattan	348	27.0	270	28.1	78	23.9	318	30.3	27,453	33.0	107	27.6
Brooklyn	334	25.9	242	25.2	92	28.1	280	26.7	20,696	24.9	110	28.4
Bronx	321	24.9	257	26.7	64	19.6	249	23.7	18,413	22.1	108	27.8
Queens	174	13.5	137	14.3	37	11.3	139	13.2	11,213	13.5	49	12.6
Staten Island	21	1.6	18	1.9	3	0.9	15	1.4	1,563	1.9	11	2.8
Unknown/outside NYC	90	7.0	37	3.9	53	16.2	49	4.7	3,911	4.7	3	0.8
Transmission risk												
Men who have sex with men	344	26.7	271	28.2	73	22.3	241	23.0	21,686	26.0	54	13.9
Injection drug use history	156	12.1	121	12.6	35	10.7	157	15.0	21,047	25.3	140	36.1
Heterosexual ⁵	163	12.7	126	13.1	37	11.3	170	16.2	14,787	17.8	60	15.5
Perinatal	3	0.2	3	0.3	0	0.0	1	0.1	2,420	2.9	0	0.0
Transfusion history	0	0.0	0	0.0	0	0.0	0	0.0	456	0.5	4	1.0
Unknown/under investigation ⁶	622	48.3	440	45.8	182	55.7	481	45.8	22,853	27.5	130	33.5
Current clinical status¹												
HIV (non-AIDS)	834	64.8	834	86.8	n/a	n/a	n/a	n/a	27,431	33.0	35	9.0
AIDS	454	35.2	127	13.2	327	100.0	1,050	100.0	55,818	67.0	353	91.0

PLWHA=persons living with HIV/AIDS

¹ For events occurring January through March 2003 and reported by December 31, 2003. Surveillance relies on laboratories and providers to report cases (see box below). Case reporting is 85% complete within 9 months.

² HIV diagnosed concurrently with AIDS (within 31 days of HIV diagnosis). Includes 34 cases in whom HIV was diagnosed in March 2003 and AIDS was diagnosed in April 2003.

³ AIDS was diagnosed in 2003 and includes concurrent HIV/AIDS diagnosis.

⁴ For HIV and AIDS diagnoses, age at diagnosis; for PLWHA, age as of March 31, 2003; and for deaths, age at death.

⁵ Includes persons with CDC-defined heterosexual risk in addition to persons with probable heterosexual transmission: Persons with a history of: a) sexual intercourse with an HIV-infected person of the opposite sex, an injection drug user, a bisexual male, or a person with hemophilia/coagulation disorder; b) heterosexual prostitution (sex work or exchange of sex for drugs); c) sexual contact with a prostitute of the opposite sex; d) multiple sex partners of the opposite sex; e) sexually transmitted disease; f) crack/cocaine use; or g) immigration from a country where heterosexual transmission of HIV predominates.

⁶ Includes individuals with no risk information reported by the provider and for whom an expanded investigation has not been completed.

Which HIV-related events are reportable in New York State, and who is required to report?

In 1998, New York State expanded AIDS case reporting to include HIV (Chapter 163 of the Laws of 1998, PHL Article 21). The law took effect on **June 1, 2000**. All diagnostic and clinical providers (doctors, nurses, physicians assistants, and all others diagnosing HIV or providing care to HIV+ persons) and laboratories are required by law to report the following events:

Events reportable by providers on the required New York State Provider Report Form (PRF)

- Diagnoses of HIV infection
- Diagnoses of HIV illness in a previously unreported individual (i.e., HIV illness not meeting the AIDS case definition, report of <500 CD4 cells/ μ L, or detectable viral load)
- Diagnoses of AIDS-defining conditions

Events reportable by laboratories

- All positive Western blot test results
- All detectable viral load test results
- All CD4 test results <500 cells/ μ L

For assistance in reporting a case of HIV/AIDS, to receive Provider Report Forms, or to obtain more information, please call HEP at 212-442-3388



**TALK TO US
CNAP
212-693-1419**

New York State law also requires that PRFs contain names of sexual or needle-sharing partners of the infected person known to medical providers or those whom the infected person wishes to have notified of their possible exposures. Providers can utilize and/or refer HIV+ persons to the NYC DOHMH Contact Notification Assistance Program (CNAP, 212-693-1419) for assistance in carrying out partner notification. **For more information about the New York State HIV reporting and partner notification law and CNAP, visit: www.health.state.ny.us/nysdoh/hiv/aids/hivpartner/intro.htm**

Reported HIV/AIDS diagnoses and deaths occurring January 1, 2002 through December 31, 2002 and persons living with HIV/AIDS as of December 31, 2002¹, in NYC

	HIV diagnoses during 1/1/2002–12/31/2002 ¹						AIDS diagnoses 1/1/2002–12/31/2002 ³		PLWHA as of 12/31/2002		Deaths in 2002	
	Total		Without AIDS		Concurrent with AIDS diagnosis ²		N	%	N	%	N	%
	N	%	N	%	N	%						
Total	5,552	100.0	4,170	75.1	1,382	24.9	4,155	100.0	82,132	100.0	2,448	100.0
Sex												
Male	3,711	66.8	2,735	65.6	976	70.6	2,824	68.0	56,910	69.3	1,667	68.1
Female	1,841	33.2	1,435	34.4	406	29.4	1,331	32.0	25,028	30.5	781	31.9
Unknown	0	0.0	0	0.0	0	0.0	0	0.0	194	0.2	0	0.0
Race/Ethnicity												
Black	2,985	53.8	2,188	52.5	797	57.7	2,236	53.8	36,180	44.1	1,315	53.7
Hispanic	1,576	28.4	1,197	28.7	379	27.4	1,209	29.1	26,189	31.9	756	30.9
White	859	15.5	681	16.3	178	12.9	621	14.9	17,658	21.5	353	14.4
Asian/Pacific Islander	95	1.7	70	1.7	25	1.8	55	1.3	796	1.0	15	0.6
Native American	9	0.2	8	0.2	1	0.1	5	0.1	56	0.1	2	0.1
Other/unknown	28	0.5	26	0.6	2	0.1	29	0.7	1,253	1.5	7	0.3
Age group (years)⁴												
0-12	59	1.1	58	1.4	1	0.1	4	0.1	1,507	1.8	6	0.2
13-19	118	2.1	100	2.4	18	1.3	67	1.6	1,134	1.4	10	0.4
20-29	947	17.1	802	19.2	145	10.5	410	9.9	4,564	5.6	60	2.5
30-39	1,965	35.4	1,514	36.3	451	32.6	1,382	33.3	22,240	27.1	473	19.3
40-49	1,599	28.8	1,136	27.2	463	33.5	1,453	35.0	32,243	39.3	1,004	41.0
50-59	637	11.5	416	10.0	221	16.0	635	15.3	15,703	19.1	646	26.4
60+	227	4.1	144	3.5	83	6.0	204	4.9	4,741	5.8	249	10.2
Borough of residence												
Manhattan	1,534	27.6	1,236	29.6	298	21.6	1,118	26.9	27,149	33.1	710	29.0
Brooklyn	1,481	26.7	1,107	26.5	374	27.1	1,277	30.7	20,426	24.9	763	31.2
Bronx	1,261	22.7	1,002	24.0	259	18.7	954	23.0	18,080	22.0	611	25.0
Queens	796	14.3	595	14.3	201	14.5	567	13.6	11,065	13.5	270	11.0
Staten Island	97	1.7	71	1.7	26	1.9	84	2.0	1,550	1.9	52	2.1
Unknown/outside NYC	383	6.9	159	3.8	224	16.2	155	3.7	3,862	4.7	42	1.7
Transmission risk												
Men who have sex with men	1,412	25.4	1,119	26.8	293	21.2	858	20.6	21,379	26.0	317	12.9
Injection drug use history	562	10.1	419	10.0	143	10.3	650	15.6	21,022	25.6	1,080	44.1
Heterosexual ⁵	917	16.5	670	16.1	247	17.9	736	17.7	14,676	17.9	391	16.0
Perinatal	58	1.0	57	1.4	1	0.1	37	0.9	2,417	2.9	16	0.7
Transfusion history	5	0.1	2	0.0	3	0.2	9	0.2	459	0.6	18	0.7
Unknown/under investigation ⁶	2,598	46.8	1,903	45.6	695	50.3	1,865	44.9	22,179	27.0	626	25.6
Current clinical status												
HIV (non-AIDS)	3,484	62.8	3,484	83.5	n/a	n/a	n/a	n/a	26,447	32.2	317	12.9
AIDS	2,068	37.2	686	16.5	1,382	100.0	4,155	100.0	55,685	67.8	2,131	87.1

PLWHA= persons living with HIV/AIDS

¹ For events occurring January through December 2002 and reported by December 31, 2003. Surveillance relies on laboratories and providers to report cases (see box on page 2). Case reporting is 85% complete within 9 months.

² HIV diagnosed concurrently with AIDS (within 31 days of HIV diagnosis). Includes 18 cases in whom HIV was diagnosed in December 2002 and AIDS was diagnosed in January 2003.

³ AIDS was diagnosed in 2002 and includes concurrent HIV/AIDS diagnosis.

⁴ For HIV and AIDS diagnoses, age at diagnosis; for PLWHA, age as of December 31, 2002; and for deaths, age at death.

⁵ Includes persons with CDC-defined heterosexual risk in addition to persons with probable heterosexual transmission: Persons with a history of: a) sexual intercourse with an HIV-infected person of the opposite sex, an injection drug user, a bisexual male, or a person with hemophilia/coagulation disorder, b) heterosexual prostitution (sex work or exchange of sex for drugs), c) sexual contact with a prostitute of the opposite sex, d) multiple sex partners of the opposite sex, e) sexually transmitted disease, f) crack/cocaine use, or g) immigration from a country where heterosexual transmission of HIV predominates.

⁶ Includes individuals with no risk information reported by the provider and for whom an expanded investigation has not been completed.

HIV and AIDS in New York City, 2002

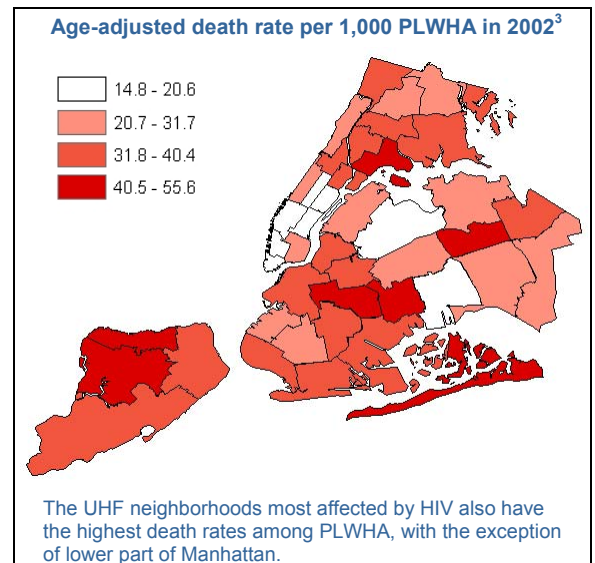
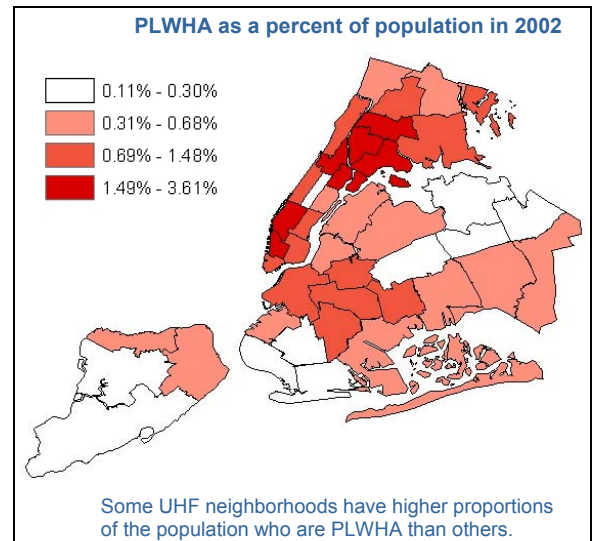
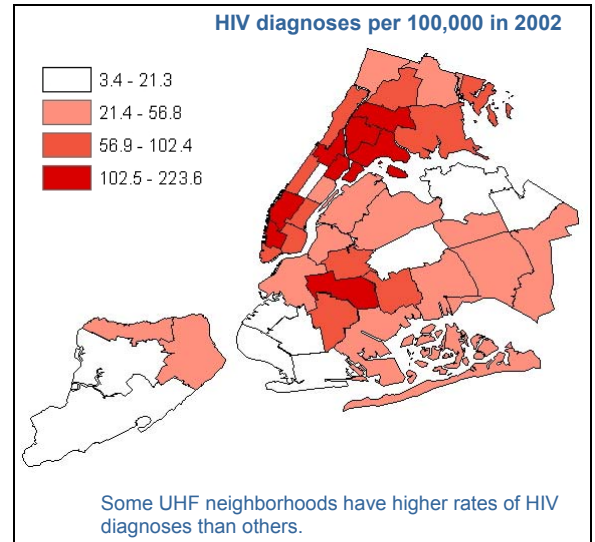
- 1% of the NYC population is HIV-positive.
 - 1.8% of blacks, 1.2% of Hispanics, and 0.6% of whites are diagnosed and known to be living with HIV or AIDS.
- In some United Hospital Fund (UHF) neighborhoods, 2% or more of the population is living with HIV or AIDS. These neighborhoods are Central Harlem-Morningside Heights, East Harlem, Highbridge-Morrisania, Hunts Point-Mott Haven, Chelsea-Clinton, and Greenwich Village-Soho. Chelsea-Clinton has the highest prevalence in the city – almost 4% of its population is HIV-positive.
- 3% of men living in Manhattan are HIV-positive.
- 4% of all men aged 40-49 and 7% of black men aged 40-49 are HIV-positive.
- Persons newly diagnosed with HIV (without AIDS) differ from PLWHA in the following ways:
 - They are more likely to be heterosexual or to have unknown risk (62% of new diagnoses vs. 45% of PLWHA)
 - They are more likely to be black (53% vs. 44%)
 - They are less likely to be IDU (10% vs. 26%)
 - Approximately equal percentages of HIV diagnoses (27%) and PLWHA (26%) are MSM

A New Surveillance System for an Old Epidemic

- HIV first entered New York City in the mid- to late 1970s. AIDS reporting was mandated in 1983, but reporting of HIV did not begin until June 1, 2000. The new HIV surveillance system has thus been superimposed onto an epidemic that is at least 25 years old.
- The NYC DOHMH now receives ~400,000 laboratory and provider reports each year and must determine through electronic matching, medical record review, and provider interview whether a report represents a new diagnosis of HIV, an established HIV infection, or a new laboratory or clinical event in a previously reported case. The number of cases and their classification as incident or prevalent diagnoses are therefore subject to change as new information is received.
- In the tables on pages 2 and 3, readers will note adjustments from quarter to quarter in the three columns labeled "HIV diagnoses during [Period of Report]". The "PLWHA" column includes all living cases, regardless of the date of diagnosis. The number of PLWHA is adjusted both by new diagnoses and through periodic matches of HARS (the HIV/AIDS Reporting System) with deaths reported to NYC Vital Statistics and the National Death Index.

Rates of reported HIV diagnoses, PLWHA, and deaths among PLWHA by United Hospital Fund (UHF) neighborhood in 2002¹

	HIV diagnoses ² per 100,000 population	Reported PLWHA as a percent of population	Age-adjusted death rate per 1,000 PLWHA ³	Population from 2000 Census
Total	69.3	1.0	29.8	8,008,278
Children (0-12 years)	4.1	0.1	4.0	1,429,677
Adults/Adolescents (13+ years)	83.5	1.2	30.3	6,578,601
Bronx⁴	95.0	1.4	34.9	1,327,690
Crotona – Tremont	132.3	1.8	38.2	199,530
Fordham – Bronx Park	77.8	1.2	31.7	250,491
Highbridge – Morrisania	150.7	2.0	34.7	189,755
Hunts Point – Mott Haven	131.0	2.0	43.6	122,875
Kingsbridge – Riverdale	32.6	0.5	39.1	88,989
Northeast Bronx	54.8	0.6	24.3	185,998
Pelham – Throgs Neck	60.7	0.9	32.6	290,052
Manhattan⁴	100.3	1.8	25.3	1,529,375
Central Harlem - Morningside Heights	180.7	2.2	39.4	151,113
Chelsea - Clinton	223.6	3.6	15.2	122,998
East Harlem	181.3	2.2	38.7	108,092
Gramercy Park - Murray Hill	66.7	1.4	18.7	124,477
Greenwich Village - Soho	120.7	2.0	18.7	83,709
Lower Manhattan	80.9	1.0	19.1	30,895
Union Square - Lower East Side	63.4	1.4	31.5	197,138
Upper East Side	29.8	0.5	20.6	218,167
Upper West Side	60.8	1.2	27.1	222,109
Washington Heights - Inwood	73.5	1.0	31.1	270,677
Brooklyn⁴	60.1	0.8	38.0	2,465,326
Bedford/Stuyvesant – Crown Heights	127.3	1.5	43.4	317,296
Bensonhurst – Bay Ridge	12.8	0.2	37.0	194,558
Borough Park	15.4	0.2	24.9	324,411
Canarsie – Flatlands	41.5	0.4	33.3	197,819
Coney Island – Sheepshead Bay	21.3	0.3	33.2	286,901
Downtown – Heights – Park Slope	56.8	1.1	40.4	214,696
East Flatbush – Flatbush	77.0	0.9	37.3	316,734
East New York	100.2	1.1	44.4	173,716
Greenpoint	37.8	0.6	35.1	124,449
Sunset Park	18.3	0.5	23.9	120,441
Williamsburg – Bushwick	102.4	1.4	39.1	194,305
Queens⁴	35.5	0.5	24.7	2,242,159
Bayside – Little Neck	3.4	0.1	33.8	88,164
Flushing – Clearview	15.7	0.2	26.3	255,542
Fresh Meadows	27.9	0.2	42.4	93,148
Jamaica	52.9	0.7	26.4	285,568
Long Island City – Astoria	43.0	0.5	29.6	220,960
Ridgewood – Forest Hills	19.9	0.3	30.6	240,901
Rockaway	48.7	0.6	44.0	106,738
Southeast Queens	30.4	0.4	14.8	203,670
Southwest Queens	30.4	0.4	28.9	269,952
West Queens	39.8	0.6	16.1	477,516
Staten Island⁴	21.9	0.3	33.5	443,728
Port Richmond	30.3	0.5	55.6	62,788
South Beach - Tottenville	8.3	0.1	35.2	179,892
Stapleton - St. George	46.5	0.6	33.5	116,227
Willowbrook	7.1	0.1	42.2	84,821



PLWHA = Persons living with HIV/AIDS

¹ Based on data reported through December 31, 2003.

² Includes diagnoses of HIV without AIDS and HIV concurrent with AIDS.

³ Age-adjusted to the city-wide population of PLWHA at the end of 2002.

⁴ Borough level data include persons residing in unknown UHF neighborhoods.