

# SEE IT FIRST

## ORDER FORM

(Please indicate quantity in the blank space provided.)

\_\_\_ **Ticket(s) to Sweeney Todd** **\$175**  
(GMHC estimates the fair market value of goods and services to be \$75)

\_\_\_ **Ticket(s) to Sweeney Todd including reception** **\$289**  
(GMHC estimates the fair market value of goods and services to be \$125)

\_\_\_ **Performance-only subscription(s)** **\$500**  
(GMHC estimates the fair market value of goods and services to be \$225)

\_\_\_ **Subscription(s) including receptions** **\$800**  
(GMHC estimates the fair market value of goods and services to be \$375)

\_\_\_ **Patron** **\$1,000**  
(GMHC estimates the fair market value of goods and services to be \$500)

\_\_\_ **Series Patron** **\$3,000**  
(GMHC estimates the fair market value of goods and services to be \$1,500)

### Sponsorships

(Please check one; descriptions on reverse of this panel)

\_\_\_ **Sponsor \$5,000**      \_\_\_ **Series Sponsor \$12,500**  
(Value - \$1,500)                      (Value - \$4,500)

\_\_\_ **Presenter \$10,000**      \_\_\_ **Series Presenter \$25,000**  
(Value - \$2,500)                      (Value - \$7,500)

### Method of payment:

- Check                       Visa                       Discover  
 MasterCard               American Express

Please make checks payable to  
Gay Men's Health Crisis (Tax ID# 13-3130146)

Credit Card # \_\_\_\_\_

Exp Date \_\_\_\_ / \_\_\_\_

Name \_\_\_\_\_

Company Name \_\_\_\_\_

Address \_\_\_\_\_

City \_\_\_\_\_ State \_\_\_\_ ZIP \_\_\_\_\_

Phone \_\_\_\_\_ Fax \_\_\_\_\_

E-Mail \_\_\_\_\_

Listing \_\_\_\_\_

(Please print your name or company as you wish it listed in printed materials)

Signature \_\_\_\_\_

Please send completed form to:  
Gay Men's Health Crisis Special Events  
The Tisch Building, 119 West 24th Street  
New York, NY 10011

Gay Men's Health Crisis (GMHC) is a not-for-profit, volunteer-supported and community-based organization committed to national leadership in the fight against AIDS. Our Mission is to reduce the spread of HIV disease, help people with HIV maintain and improve their health and independence, and keep the prevention, treatment and cure of HIV an urgent national and local priority. In fulfilling this Mission, we will remain true to our heritage by fighting homophobia and affirming the individual dignity of all gay men and lesbians.

For information about our educational materials, please call GMHC Publications: 212/367-1205. For all other information, please call the Hotline or visit our website.

**GAY MEN'S HEALTH CRISIS**  
**The Tisch Building**  
**119 West 24 Street**  
**New York, NY 10011**

**AIDS HOTLINE:**  
**1-800-AIDS-NYC (1-800-243-7692)**  
**IN NYC: 212/807-6655**  
**E-MAIL: hotline@gmhc.org**  
**WEBSITE: www.gmhc.org**



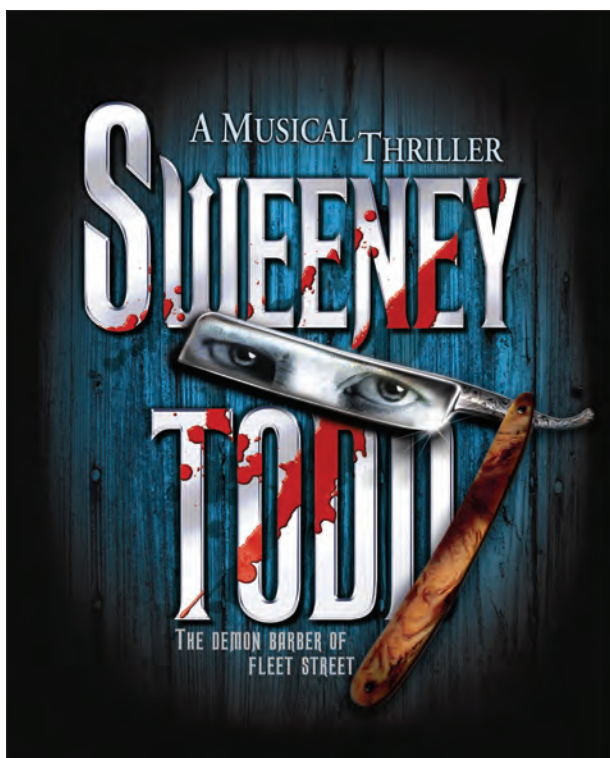
© 2005 Gay Men's Health Crisis, Inc.

**SEE IT FIRST**  
**WITH GMHC**

A three-part series of theatrical events benefiting Gay Men's Health Crisis

Gay Men's Health Crisis is pleased to announce our new three-part series of special benefit performances of the most exciting new Broadway productions:

**SEE IT FIRST**  
WITH GMHC



All proceeds to benefit  
Gay Men's Health Crisis

**Our inaugural  
See It First evening\***

**Sweeney Todd:**

**The Demon Barber of Fleet Street**

A performance of the Broadway debut of John Doyle's smash West End (London) restaging of Stephen Sondheim's classic *grand guignol* tale.

**Starring**

**Michael Cerveris** as "Sweeney Todd"  
and  
**Patti LuPone** as "Mrs. Lovett"

**Tuesday, November 15, 7:00 PM**  
**The Eugene O'Neill Theatre**  
**230 West 49th Street**

Each *See It First* performance will be followed by a dinner reception with members of the cast at



**The Eugenia Room**  
**234 West 44th Street**

The second and third *See It First* performances will take place in winter and spring 2006. Each will be announced three to four months in advance of its date. Whenever possible, the performances will take place on Tuesdays at 7:00 PM.

For more information or to purchase  
by phone, please call  
**The Events Line: 212/367-1472**

\*The previously announced evening at **Mambo Kings:**  
**The Musical** has been cancelled.

**Tickets/Subscriptions/Packages**

**Tickets:**

- **One performance alone** **\$175**
- **Performance with reception** **\$289**

**Subscriptions:**

- **Full See It First series** **\$500**  
1 ticket to each of three performances  
(fall '05, winter '06, spring '06)
- **Full series with receptions** **\$800**

**Patron Packages:**

- **Single Performance** **\$1,000**  
4 tickets to single performance and reception;  
listed as Patron on GMHC website
- **See It First Series Patron** **\$3,000**  
4 tickets to each of the three performances  
and receptions in the series; listed as  
Series Patron on GMHC website

**Sponsorships**

**Series Sponsorships:**

- **See It First Series Presenter** **\$25,000**  
20 tickets to each of the three performances  
and three receptions in the series; name/logo  
listed prominently after name of series and/or  
show in all materials and on website; special  
thank-yous at receptions; opportunity for gift bag  
placement of corporate promotional information
- **See It First Series Sponsor** **\$12,500**  
12 tickets to each of the three performances  
and three receptions in the series; listed as a  
Series Sponsor on GMHC website and on materials

**Single Event Sponsorships:**

- **Presenting Sponsor** **\$10,000**  
20 tickets to single performance and reception;  
name listed after name of show in printed materials  
and on website; special thank-you at reception;  
opportunity for gift bag placement of corporate  
promotional information
- **Sponsor Package** **\$5,000**  
12 tickets to single performance and reception;  
listed as Patron Sponsor on GMHC website and  
in printed materials

**See reverse for order form**